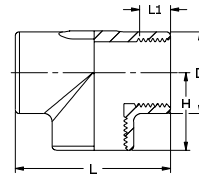


OT 2210
Tees



DN	Dim.	L	L1 ISO228/1	H	D	Design pressure Mpa	Weight kg/pce	Article Code BSP-threaded EN 1.4408	Article Code NPT-threaded EN 1.4408
6	1/8"	38.0	12	19	14.0	10.0	0.04	11-0221-01	11-0221-51
8	1/4"	42.0	13	21	17.5	10.0	0.05	11-0221-02	11-0221-52
10	3/8"	50.0	15	25	21.6	10.0	0.08	11-0221-03	11-0221-53
15	1/2"	56.0	16	28	27.0	10.0	0.15	11-0221-04	11-0221-54
20	3/4"	67.5	18	34	33.0	10.0	0.26	11-0221-05	11-0221-55
25	1"	76.0	20	38	40.0	10.0	0.37	11-0221-06	11-0221-56
32	1 1/4"	90.0	22	45	51.0	6.4	0.61	11-0221-07	11-0221-57
40	1 1/2"	100.0	24	50	57.6	6.4	0.91	11-0221-08	11-0221-58
50	2"	116.0	27	58	67.8	6.4	1.18	11-0221-09	11-0221-59
65	2 1/2"	150.0	30	75	84.0	4.0	1.88	11-0221-10	-
80	3"	160.0	34	80	98.0	4.0	3.37	11-0221-11	-